



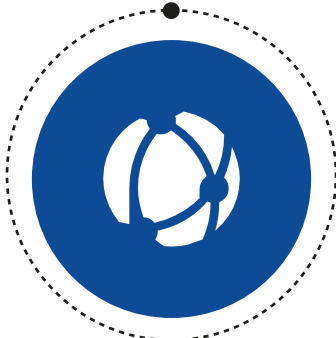
# BUKE

## **SOBRE NOSOTROS**



### **ALCANCE DE NEGOCIOS**

Somos una corporación integral dedicada al diseño, fabricación, venta, alquiler y mantenimiento de equipos y herramientas de petróleo y servicios de ingeniería de petróleo.

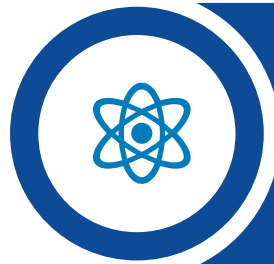


A lo largo de los años, con respecto a “Orientado al cliente, Mejora continua, Casting Brand” como nuestra guía de gestión, nos esforzamos continuamente por innovar y mejorar nuestros productos y expandir los negocios relacionados con el campo petrolero.



**DISEÑO E  
INGENIERÍA**

**PRODUCTOS**



**FINANCIACIÓN**

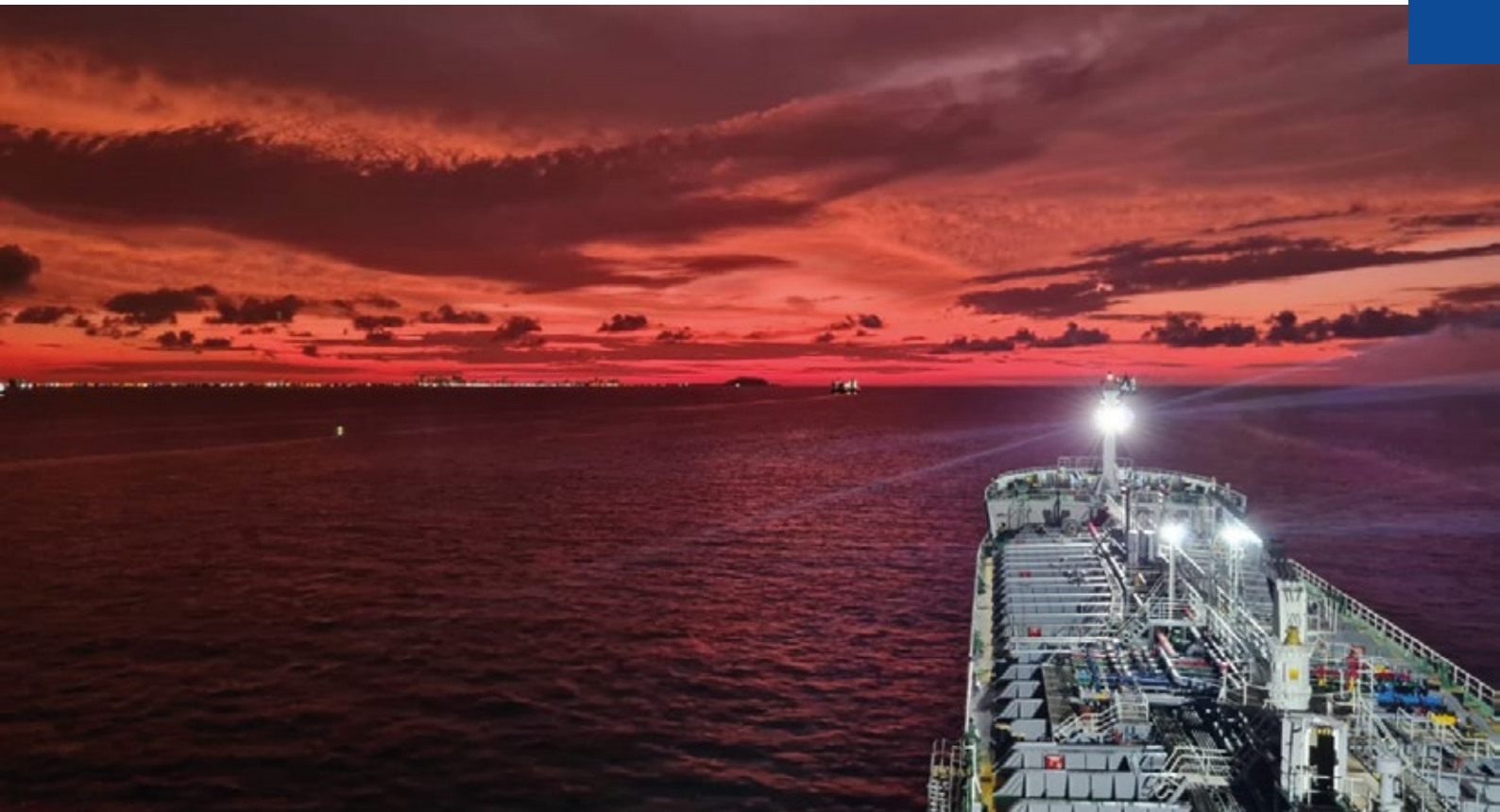
**CALIDAD Y  
EXPERIENCIA**



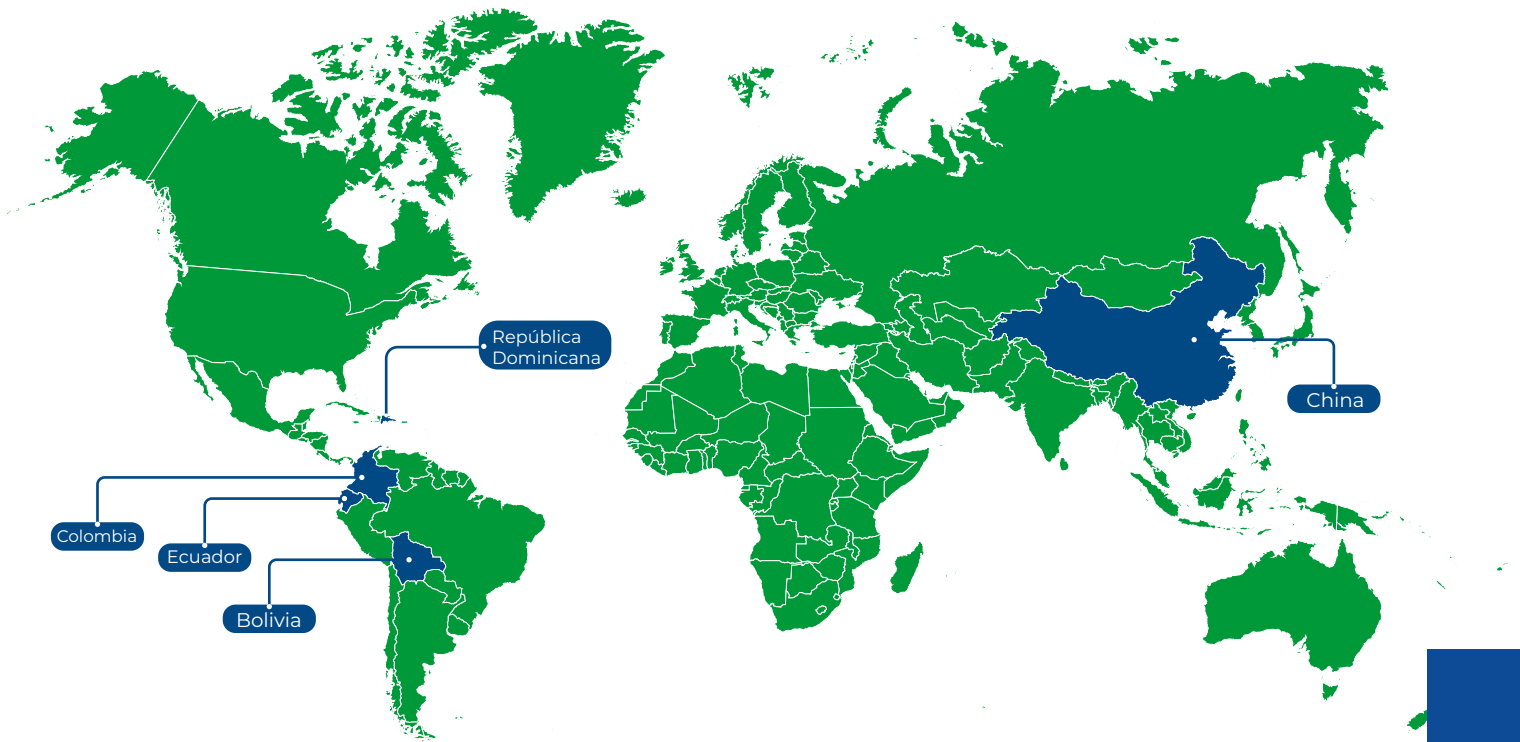
# BUKE

## FINANCIACIÓN

Con nuestra conexión con los canales financieros internacionales, podemos brindar condiciones de pago favorables y un servicio personalizado para cada uno de nuestros valiosos clientes.



# PAÍSES DE INFLUENCIA



- China
- República dominicana
- Ecuador
- Bolivia
- Colombia

# PRINCIPALES PRODUCTOS



## Drilling and workover equipment

- Truck mounted workover rig
- Skid mounted drilling rig
- Auxiliaries of drilling and workover rig
- Top drive



## Oil and gas stimulation equipment

- Membrane separation nitrogen generation unit
- Liquid nitrogen pump equipment
- Fracturing unit
- Coiled tubing unit
- Cementing unit



## Construction machinery

- Excavating machinery
- Concrete machinery
- Loading equipment
- Hoisting machinery
- Road building machine
- Coal mining mechanic equipment



## Wellhead equipment

- Wellhead equipment
- Well - control equipment
- Subsea Christmas Tree



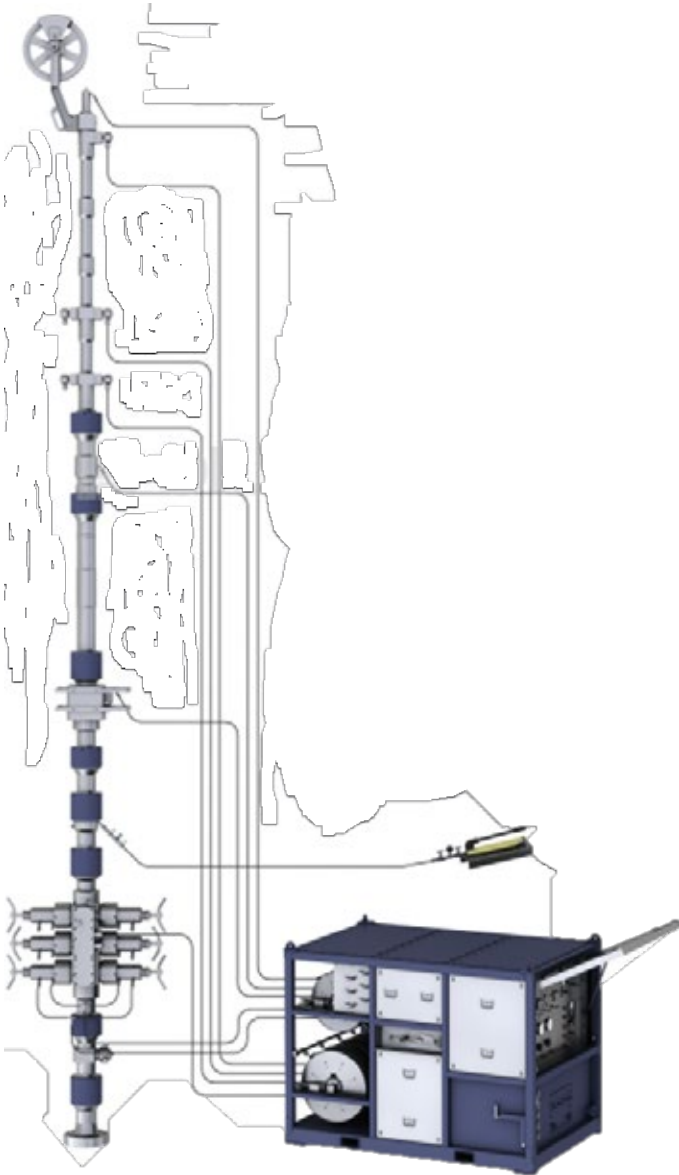
## Stimulation

- Perforating guns



## PRODUCTOS DE WIRELINE Y SLICKLINE

### Wellhead Pressure Control Equipment



Wellhead Pressure Control Equipment	
Wellhead Equipment	1
Wireline Valves	
Wellhead Adapter	
Pump In Tee/Sub	
Side Entry Fishing Branch Sub	
Tool Trap	
Hydraulic Tool Catcher	
Lubricator	
Grease Injection System	
Hydraulic Stuffing Box	
Hay Pulleys	
Hay Pulley Floor Stand	
Lubricator Lifting clamp/Spreader Bar	
Rig-Up Dollies	
Wireline Clamp	
Quick Union Test Cap Plug Assembly	
Quick Test Sub	
Quick Unions	

## API 16A - 16D



## PRODUCTOS DE WIRELINE Y SLICKLINE

### Ultra - sonic Scanner Tool

#### Applications

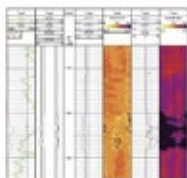
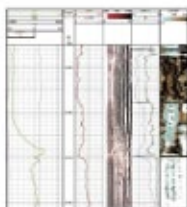
- Ultrasonic Cement Evaluation/ Imaging
- Casing Corrosion Inspection (both Thickness and Diameter)

#### Benefits

- Simultaneous Cement Evaluation & Casing Inspection
- Combinable with ACT-D tool or D68 for reduced rigtime

#### Features

- Real-Time Fluid Compensation
- Optional scanner assembly with inline centralizer for slim hole



#### Introduction

USI-D provides a wealth of information about well. In cased hole, ultrasonic pipe inspection and cement evaluation can be obtained simultaneously. Operating over a wide range of downhole environments, the USI-D offers a full 360° profile of the borehole that can be presented in a variety of two-dimensional and three-dimensional formats. Powerful, yet user friendly imaging analysis software is available to process images, histograms, and curve-type data from PDASView.



#### Specifications

Maximum Temperature	350°F (175°C)
Maximum Pressure	20,000 psi (137.9 MPa)
Length	14 ft. - 6.85 in. (4.52 m) 16 ft. - 11.9 in. (5.18 m) with slim centralizer for 5A 278 lbs. (125 kg) 310.0 lbs. (141 kg) with slim centralizer for 5A
Weight	3.625 in. (92 mm)
Diameter	180 Vac, 120 mA
Power Requirements	100 VDC, <math>\pm 1.5 A</math>
Motor Power	* The scanner assembly with slim inline roller centralizer was used for 5 in. - 7 in. casing
Cement Bond & Casing Corrosion Mode	
Finng Rate	30, 45, 60, 90 shots/scan (Optional)
Vertical Scan Rate	4 scans/ft. at 3.0 in. sampling
Vertical Sampling (Software)	0.0, 0.0 or 1.0 in.
Logging Speed	80, 30 or 10 ft./min (Depending on sampling rate)
Principle	Ultrasonic Pulse Echo and time of flight
Primary Curves	Reflected Amplitude, Radius Acoustic Impedance, Casing Wall Thickness
Secondary Curves	Relative Bearing, Deviation, Fluid TT, Compressive Strength, Mud Impedance
Imaging Inspection Mode	
Finng Rate	180 shots/scan
Vertical Scan Rate	40 scans/ft. at 3.0 in. sampling
Vertical Sampling (Software)	0.3 in.
Logging Speed	21 ft./min
Principle	Ultrasonic Pulse Echo and time of flight
Primary Curves	Reflected Amplitude, Travelling Time
Secondary Curves	Relative Bearing, Deviation, Fluid TT, Radius
Minimum Diameter Hole	4.276 in. (108 mm)
Maximum Diameter Hole	13 in. (330 mm)
Wireline Requirements	7-Conductor Cable 250 kHz, 350 kHz, 450 kHz, 561 type 330 kHz, 661 type 300 kHz, mud transducer
Transducer	
Head Assembly	
Fixed	3-1/8 in., 3-5/8 in., 4-3/8 in., 5-5/8 in., 7 in. dia.
Adjustable	3 in. - 9.25 in effective head radius

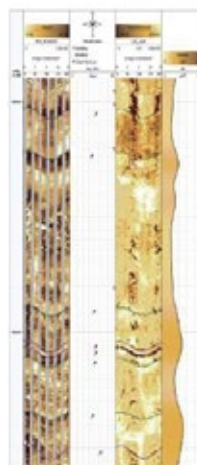


#### Applications

- Structural and bedding analysis
- Completing detailed fracture studies
- Dip and strike determination
- Determining high-resolution borehole shape
- Stress analysis and borehole stability studies

#### Features

- Measures acoustic amplitude reflectance and two-way travel time
- Full 360° coverage of the borehole with images containing up to 256 data samples
- Reliably operates in any mud type
- Combine with Herapod Resistivity Imaging Tool



#### Introduction

This tool is an acoustic device designed to produce detailed images of the wellbore wall (or casing). The USI pulse-echo transducer emits a high frequency acoustic pulse and measures the amplitude and the time of flight of the reflected wave. The amplitude of the reflected wave is affected by variations in the borehole surface. The travel time is indicative of the distance from the transducer to the wellbore wall. The acoustic transducer is mounted on a rotating section, allowing the USI to scan the full 360 degrees of the wellbore producing two images or maps.

#### Specifications

Maximum Temperature 6 hours at	400°F (200°C)
Maximum Pressure	20000 psi (137.88 MPa) (1406.0 kg/cm <sup>2</sup> )
Tool Diameter	
Electronics	3.375 in. (8.57 cm)
Mandrel	3.625 in. (9.21 cm)
Make-up Length	
Electronics	7 ft. - 5.8 in. (2.26 m)
Mandrel	8 ft. - 0.6 in. (2.45 m)
Shipping Length	
Electronics	8 ft. - 11.9 in. (2.74 m)
Mandrel	9 ft. - 1.3 in. (2.78 m)
Tool Weight	
Electronics	130 lbs. (54.4 kg)
Mandrel	150 lbs. (68.0 kg)
Shipping Weight	
Electronics	140 lbs. (63.5 kg)
Mandrel	170 lbs. (77.1 kg)
Maximum Tensile Force	
Electronics	40,000 lbs.
Mandrel	17,500 lbs.
Maximum Compressive Force	
Electronics	4,000 lbs.
Mandrel	4,000 lbs.
Data Transmission	MGT5
Power Requirements	The motor powered by 110 Vdc
Samples per Scan	250/125
Scan Speed	18 scans per second, nominal
Imaging Transducers	
Quantity	2
Size/type	1.5 in. (38.1 mm), and 2.0 in. (50.8 mm) housed, ceramic
Frequency of Operation	250 kHz
Orientation Facility	Inertial Magnetometer, or reference to CRT
Orientation	Internal self-contained
Fluid Velocity Reference	250 kHz ceramic transducer
Logging Speed	
Vertical Resolution	10 ft./min (2.05 m/min), 60 scans per foot (s.p.f.) 20 ft./min. @ 10 m/min @ 30 s.p.f.
Radial Resolution Typically	10 samples/in. in an 8 in. borehole
(borehole Diameter Range)	5.5 in. (139.7 mm) to 16 in. (406.4 mm)
Maximum Borehole Deviation	90°





# WIRELINE AND SLICKLINE PRODUCTS

## Combo Log

Muchos instrumentos especiales se pueden combinar con ComboLog Logging

1. Reservoir Characterization Tester-Express (RCT-X)
2. Nuclear Magnetic Resonance Tool-M (NMR-M)
3. Multipole Array Acoustic Tool (MAA)
4. Ultrasonic Scan Imaging Tool (USI/USI-V/USI-G)
5. Hexapod Resistivity Imaging Tool WBM/OBM (RIT-WBM/OBM)
6. Slim Hexapod Resistivity Imaging Tool-WBM/OBM (SRI-WBM/OBM)

El RCT está diseñado para la presión de formación y la formación de muestras de fluidos a diferentes profundidades dentro de un yacimiento.

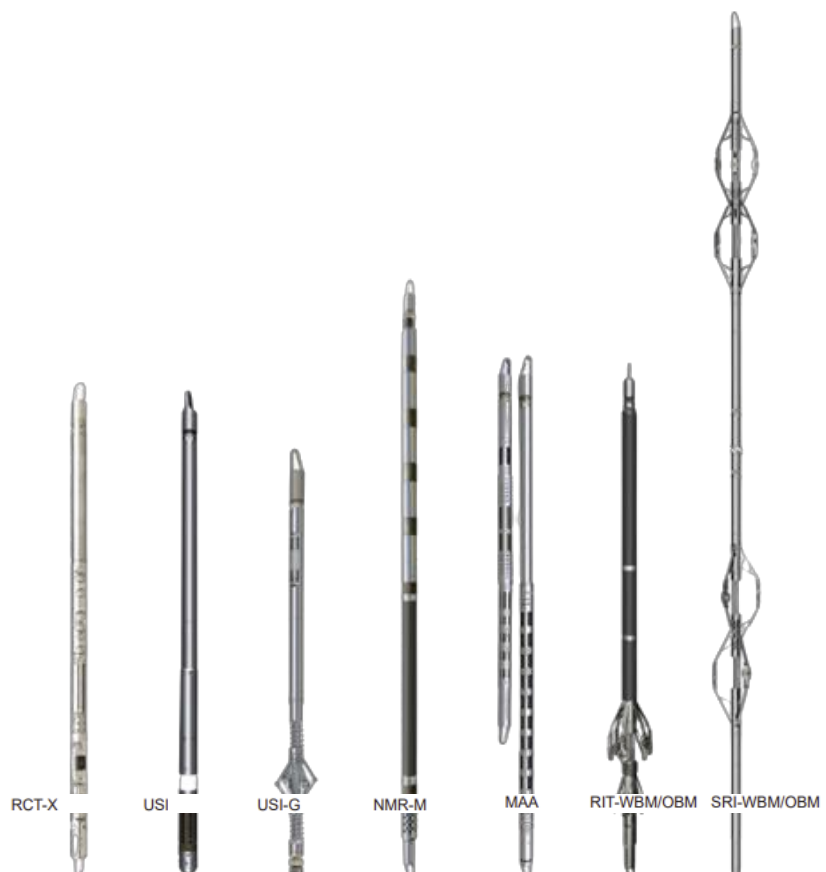
El RMN - M mide la porosidad del hidrógeno y las tasas de relajación de los protones.

El MAA proporciona mediciones de monopolos y dipolos cruzados de la mejor calidad en formaciones no consolidadas donde

Las herramientas de la competencia han fracasado.

El USI y el USI-G son dispositivos acústicos diseñados para producir imágenes detalladas de la pared del pozo. V/USI-

El RIT (WBM/OBM) es un instrumento de imágenes de resistividad, mide la conductividad de la formación que atraviesa.



# CAÑONES DE PERFORACIÓN

Especialistas en diseño y distribución de cañones para cualquier tipo de carga



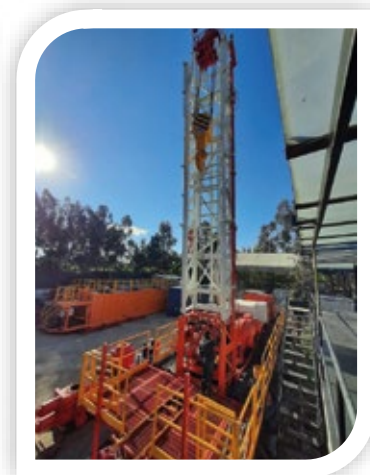
No.	Gun Size (in)	Wall Thick (in)	Length (ft)	Shot Density (SPF)	Phasing	Pressure Rating (psi)
1	1 1/2	0.177	2,3,4,5,7,11,5,21	4,5,6	90	15000
2	2	0.197		4,5,6	60,90	15000
3	2 3/8	0.197		4,5,6	60,90	15000
4	2 3/4	0.312		4,5,6	60,90	15000, 20000
5	2 7/8	0.312		4,5,6	60,90	15000, 20000
6	3 1/8	0.313		4,5,6	60,90	15000, 20000
7	3 3/8	0.375		4,5,6	60,90	15000, 20000, 29000
8	3 1/2	0.375		4,5,6	60,90	15000, 20000, 29000
9	4	0.433		4,5,6	60,90	15000, 20000, 29000
10	4 1/2-5/8	0.453		4,5,6,12	60,90,135	15000, 20000, 29000
11	5	0.433		4,5,6,12	60,90,135	15000, 20000, 29000
12	7	0.498		12	45	15000, 20000

## FABRICACIÓN Y RENTA DE RAPID SERVICES UNIT. (RSU)

Pioneros en la fabricación de estos prácticos rigs



\* RSU desde 90T a 135T



# FABRICACIÓN Y RENTA DE UNIDADES DE SLICKLINE Y WIRELINE

Fabricamos unidades Eléctricas Híbridas y Convencionales

\*Fotos unidad Híbrida entregada en 2023



# BUK

## VENTA Y ALQUILER DE CONTROL DE POZOS



wellhead equipment



Well-control equipment



# DOWNHOLE

03

Including but not limited to

Down Hole Tool

Drilling Jar

Shock Tools

Casing Scraper

Casing Brush

String Magnet

Stabilizer





# BUKE

SERVICIOS Y PRODUCTOS MARÍTIMOS



## DIVISIÓN DE SOLUCIONES OFFSHORE

BUKE(Chengdu) Energy Technology Co., Ltd., como una empresa de servicios técnicos, compuesta por tecnologías marítimas y de embarcaciones con experiencia; Dentro de los años de experiencia en construcción naval, reparación de barcos, servicio de ingeniería y suministro marítimo, podemos proporcionar una variedad de repuestos de motores, tiendas, servicio de reparación, estructuras/equipamientos de acero personalizados, soporte logístico, Prometemos proporcionar: una solución marítima profesional, eficiente, confiable, segura e integral para su buena embarcación.

### Especialistas en soluciones para las marcas



En BUKE ofecemos los servios de:

- ⚓ Mantenimiento de barcos
- ⚓ Repuestos con certificación de clase
- ⚓ Mantenimiento de calderas y suministro de piezas
- ⚓ Contamos con personal calificado y profesional que cuentan con certificación de marino mercante
- ⚓ Ofrecemos y tenemos experiencia en montaje industrial y mantenimiento en barcos

**Tecnicos certificados caterpillar y Hyundai**





## REPUESTOS DE MAQUINA PRINCIPAL

MAN B&W: S26MC, S35MC, L35MC/MCE, S42MC, L42MC/MCE, S50MC, S50MC-C, L50MC/MCE

S60MC, S60MC-C, L60MC/MCE, S70MC, S70MC-C, L70MC/MCE, L45GFCA, L55GFCA, L67GFCA, L67GBE, L80GFCA, L90GBE

SUZLER: RND68(M), RND76(M), RND90(M), RLA(B)56, RLA(B)66, RLA(B)76, RLA(B)90, RTA38, RTA48, RTA48T, RTA48T-B, RTA52, RTA52U, RTA58, RTA58T, RTA62, RTA62U, RTA68, RTA72, RTA72U, RTA76, RTA84, RTA84C, RTA84T Flex-RT50, Flex-RT60, Flex-RT82

MITSUBISHI: UEC37/88H;UEC45LA:UEC52/105D;UEC60LA/LS

UEC52L/LA,UEC45/110,UEC45/115H,UEC60/150H,UET45/80D, UET45/75C



Valve Seat



Cylinder Liner



Inlet/Exhaust Valve



Nozzle



Piston Crown



Piston Skirt



Injector pump plunger



Water Jackets



Piston Ring

MAN:L16/24,L+V20/27,L23/30(H/A),L21/31,L27/38,L+V28/32(H/A),L32/40 DAIHATSU:PS-26-D,PS-26H,DS-18,DS-22,DL-20,DK-20,DK-26,DK-28 YAN-MAR:S165,S185,M200L,M200L,N330 Serials, N18, N21  
Deutz MWM: TBD 234/314/316/604/620  
Cummins: V/VT/VTA, N/NT/NTA,K/KT/KTA,BT/CT/QS Series  
China Made 4-Stroke Diesel Engine & Spare Parts



Inlet/Exhaust Valve



Piston Rod



Cylinder Cover



Cylinder Liner



Piston Crown



Cylinder Cover

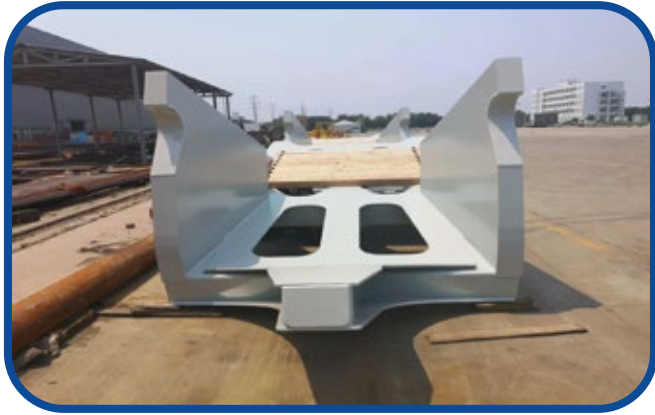


Crankshaft



## FABRICACIÓN DE ESTRUCTURAS

**ANCLA DEL LADO DE LA DRAGA  
(JAN DE NUL PROJECT)**



**TRANVÍA DE LA PISCINA DE LA LUNA  
(JAN DE NUL PROJECT)**



**PROCESAMIENTO DE ENGRANAJES**



**ESTRUCTURA DE SOPLADO DE PROA  
DE LA DRAGA  
(JAN DE NUL PROJECT)**



**CAJA DE CAMBIOS**



**BANCO DE ENSAYOS DE FATIGA DE PALAS  
DE AEROGENERADORES**







# **BUKE**

PISTOLAS PERFORADORAS

# CERTIFICACIONES E INSTALACIONES.



Disponemos de pistola perforadora perfecta.  
Equipo de producción y calidad confiable.  
capacidad de control.

Capacidad de producción anual:

(1) conjunto de pistola de perforación de menos  
de 3 pies de pulgada Longitud: 250.000 series.

(2) componentes de pistolas perforadoras  
de más de 4 pies: 25.000 juegos.

La capacidad de producción total es 300000  
metros/año.



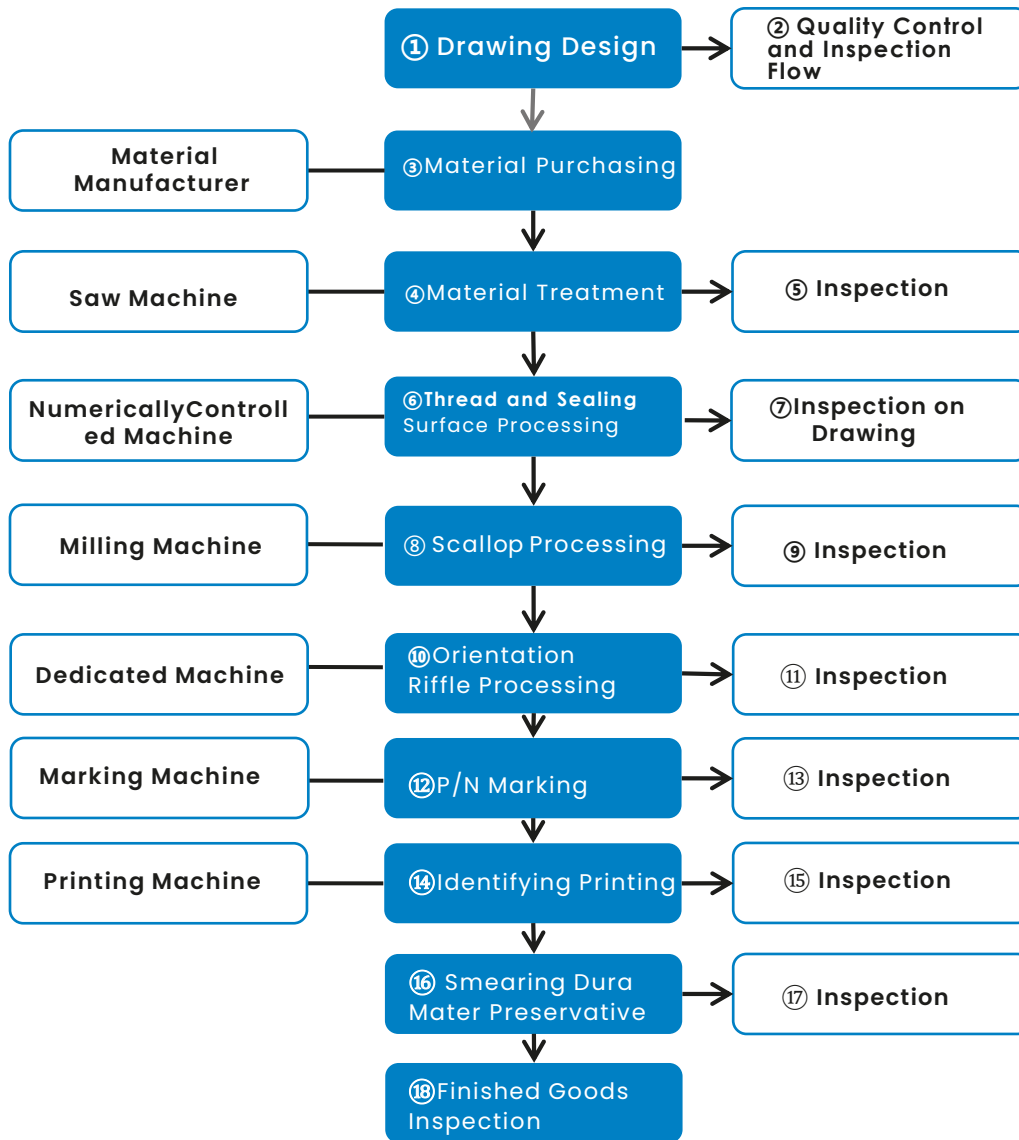
## FABRICACIÓN DE ÚLTIMA GENERACIÓN

Instalaciones de última tecnología, robótica, pruebas y diseño.



## Proceso de fabricación de pistolas perforadoras

### 1. Proceso de fabricación del cuerpo de la pistola





# INFORMACIÓN TÉCNICA

Especialistas en el diseño y distribución de barricas para cualquier tipo de carga

No.	Gun Size (in)	Wall Thick (in)	Length (ft)	Shot Density (SPF)	Phasing	Pressure Rating (psi)
1	1 1/2	0.177		4,5,6	90	15000
2	2	0.197		4,5,6	60,90	15000
3	2 3/8	0.197		4,5,6	60,90	15000
4	2 3/4	0.312		4,5,6		15000, 20000
5	2 7/8	0.312	2,3,4,5,7,11,5,21	4,5,6	60,90	15000, 20000
6	3 1/8	0.313		4,5,6	60,90	15000, 20000
7	3 3/8	0.375		4,5,6	60,90	15000, 20000, 29000
8	3 1/2	0.375		4,5,6	60,90	15000, 20000, 29000
9	4	0.433		4,5,6	60,90	15000, 20000, 29000
10	4 1/2 - 3/4	0.453		4,5,6,12	60,90,135	15000, 20000, 29000
11	5	0.433		4,5,6,12	60,90,135	15000, 20000, 29000

**Product Overview:**

Multi-stage pulse perforation technology combines jet perforation with two-stage powder fracturing technology. After perforating, the high pressure generated due to the difference of burning rate of different powder acts on the formation repeatedly in the form of dynamic pressure. This technology owns completely independent intellectual property rights and has won 6 patents, which won the CNPC and Tianjin Science and Technology Progress Awards respectively and has been included in the directory of national key new products.

**Technical Features:**

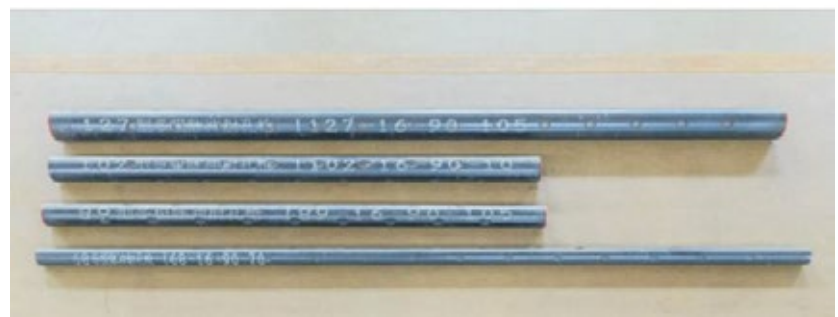
- Remove the compaction zone of the perforation tunnel to improve permeability.
- Increase the hole depth and fracture width, and the seepage radius increases and it is not likely to close.
- The effect of pollution and blockage removal is obvious due to fracture making and extension.
- Depth of fracture extension > 3m

**Technical Parameters:**

Gun Series: φ68, φ89, φ102, φ127  
 Compression Resistance: 105MPa  
 Temperature Resistance: 180°C  
 Shot Density: 16hole/meter  
 Azimuth: 4 azimuth, 6 azimuth  
 Applicable Casing: 4", 4 1/2", 5", 5 1/2", 7"



## MULTISTAGE PULSE PERFORATOR





**Product Overview:**

The ultra-high pressure perforating equipment is researched and developed by the processing plant according to the characteristics of deep reservoir burial, high formation temperature and high pressure at well bottom in the front block of Kuqa Mountain in Tarim oilfield. Currently there are models 89 and 121 with working pressures of 210 and 185 MPa respectively. The ultra-high-pressure perforator of the processing plant passed the quality evaluation of China Petroleum Perforating Equipment in 2016 and entered the product list. The research and development of this project has gone through several stages, including tubing material selection, equipment design, test and inspection, etc. It took 3 years and now in the stage of popularization and application.

**Technical Features:**

This series of perforators adopt BG155P high strength and high toughness perforating tubes, and the gun body has strong compression resistance and expansion resistance.

It has high compression resistance level. The wall thickness of tube is effectively reduced and the perforation quality is improved.

**Technical Parameters:**

- Gun Series:  $\phi 73$ ,  $\phi 89$ ,  $\phi 121$
- Compression Resistance: 175MPa, 210MPa
- Temperature Resistance: 210°C
- Shot Density: 16hole/meter
- Azimuth: 4 azimuth, 6 azimuth
- Applicable Casing: 4 1/2", 5", 7"

规格名称	输入参数	输出数据
压力4		长度: 4.7m 重量: 210kg 工作压力: 210MPa 射孔密度: 16孔/米
温度1		材料: A 级钢件 硬度: 30HRC
力4		长度: 4.7m 重量: 210kg 工作压力: 210MPa 射孔密度: 16孔/米



## HIGHT PREASSURE PERFORATING EQUIPMENT

## AFTER - EFFECT SERIES

**Product Overview:**

Enhanced large-diameter perforators are mainly used in oil and gas reservoirs with low permeability, ultra-low permeability and high fracture pressure. The series of perforators successfully developed by scientific and technological innovation has great significance for improving crude oil recovery efficiency in low permeability oil fields and is mainly applied to Zhanjiang offshore platform.

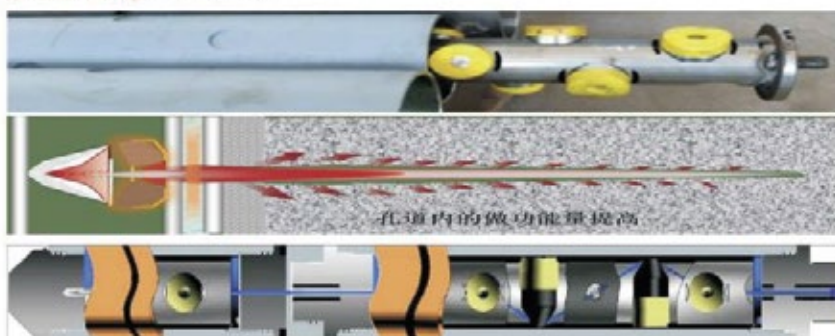
**Technical Features:**

The aftereffect body is excited by the detonation wave and metal jet formed by the perforating bullet and releases a large amount of chemical energy and heat energy as well as the shock wave in conversion, which can act in the perforation tunnel instantaneously to enlarge the aperture, deepen the tunnel, change the shape of the tunnel and achieve the purpose of improving the perforation efficiency.

At the same time, the high-energy particles and energy waves released by the aftereffect body also impact, scour and peel off the hole wall, releasing the compaction zone formed around the tunnel and recovering natural permeability around the tunnel, thus increasing the productivity of oil and gas well.

**Technical Parameters:**

- Gun Series:  $\phi 127$ ,  $\phi 178$
- Compression Resistance: 70MPa, 105MPa
- Temperature Resistance: 180°C
- Shot Density: 30hole/meter, 40hole/meter
- azimuth: 4 azimuth, 6 azimuth, 8 azimuth
- Applicable Casing: 5 1/2" 7", 9 5/8"



## PRODUCT SHOULD



127 double male joint



127 female joint



89 double male joint



102 female joint



178 female joint



Type 89 female joint



102 double male joint



New 102 female joint

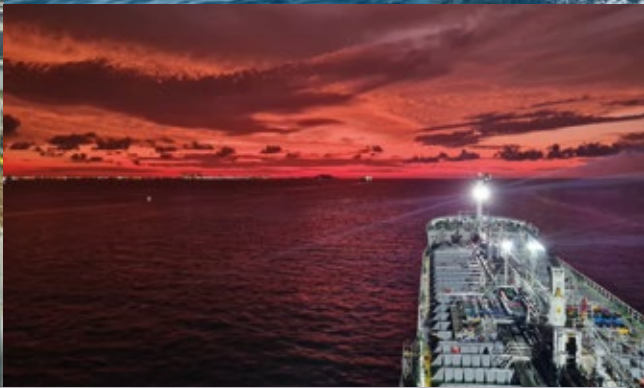


New 102 male joint

# CLIENTES PRINCIPALES











# BUKE

SOLUCIONES DE ENERGÍA SOLAR

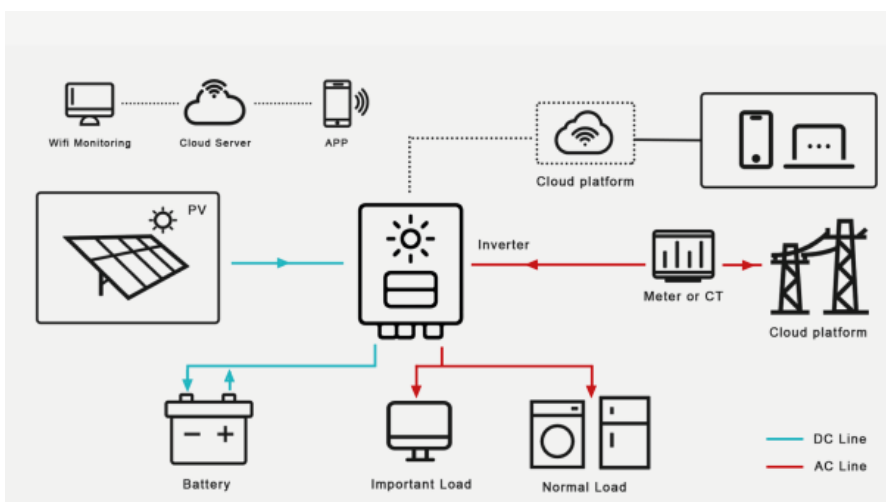


# USO RESIDENCIAL (KIT SOLAR BALCON BOX)

## DATOS IMPORTANTES :

Sistema de energía solar uso emergencia  
(Full cargas esperadas 3 horas de autonomía)  
para sostener el siguiente listado de cargas  
por tiempo limitado:

PROMEDIO HOGAR 2 A 3 PERSONAS				
ELEMENTO	POTENCIA EN WATT	CANTIDAD	HORAS DE USO	CONSUMO DIA EN WATT
Nevera	130	1	3	390
Ventilador	40	2	2	160
Television	100	2	2	400
Luces	10	6	4	240
computadores	160	2	4	1280
otros	280	1	2	560
<b>CONSUMO DIA</b>				<b>3030</b>



## Compuesta por :

- panel solar para balcon 450 watts
- batería solar emergencia (3000 watts)
- inversor 110v 60 hz cargador de 1000 watts

**Energía generada día:  
2970 w max**





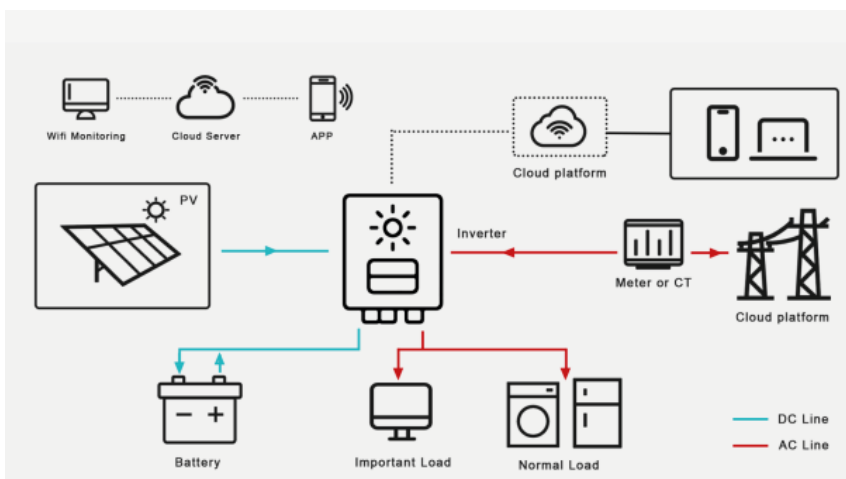
# USO RESIDENCIAL (KIT SOLAR BALCON BOX)

## DATOS IMPORTANTES :

Sistema de energía solar uso continuo (Full cargas esperadas 6 a 8 horas autonomía), para sostener el siguiente listado de cargas por tiempo limitado:



PROMEDIO HOGAR 2 A 3 PERSONAS				
ELEMENTO	POTENCIA EN WATT	CANTIDAD	HORAS DE USO	CONSUMO DIA EN WATT
Nevera	130	1	3	390
Ventilador	40	2	2	160
Television	100	2	2	400
Luces	10	6	4	240
computadores	160	2	4	1280
otros	280	1	2	560
<b>CONSUMO DIA</b>				<b>3030</b>



## Compuesta por :

- 2 panel solar para balcon 450 watts
- batería solar emergencia (3000 watts)
- inversor 110 60 hz cargador de 1000 watts

**Energía generada día:  
5940 w max día**



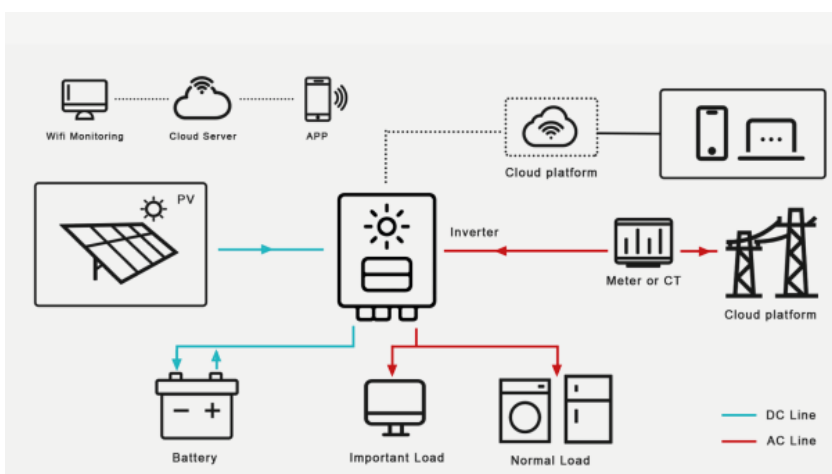
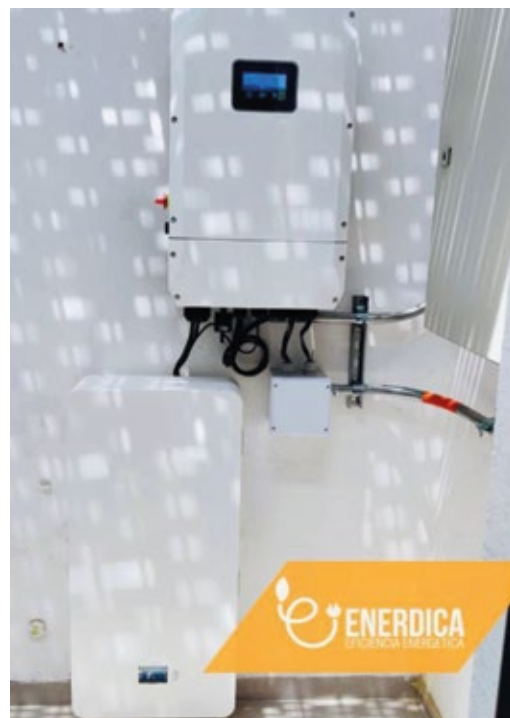


# USO RESIDENCIAL (KIT SOLAR BALCON BOX)

## DATOS IMPORTANTES :

Sistema de energía solar uso emergencia /continuo ( Full cargas esperadas 6 a 8 horas de autonomía), para sostener el siguiente listado de cargas por tiempo limitado :

PROMEDIO HOGAR 2 A 3 PERSONAS				
ELEMENTO	POTENCIA EN WATT	CANTIDAD	HORAS DE USO	CONSUMO DIA EN WATT
Nevera	130	1	8	1040
Aire acondicionado	1200	1	8	9600
Ventilador	40	2	8	640
Television	100	2	6	1200
Luces	10	6	10	600
Microhondas	1100	1	1	1100
computadores	160	2	10	3200
otros	280	1	4	1120
<b>CONSUMO DIA</b>				<b>18500</b>



## Compuesta por :

- 8 panel solar para tejado 450 watts
- 1 batería solar emergencia (10000 watts)
- Inversor 110v/ 220 v 60 hz cargador de 8000 watts

**Energía generada día:  
2970 w max**





# BUKE

